

The JOpera Autonomic Workflow Engine

Thomas Heinis
heinist@inf.ethz.ch
Department of Computer Science
Swiss Federal Institute of Technology (ETHZ)
Zurich, Switzerland

Cesare Pautasso
pautasso@inf.ethz.ch
Department of Computer Science
Swiss Federal Institute of Technology (ETHZ)
Zurich, Switzerland

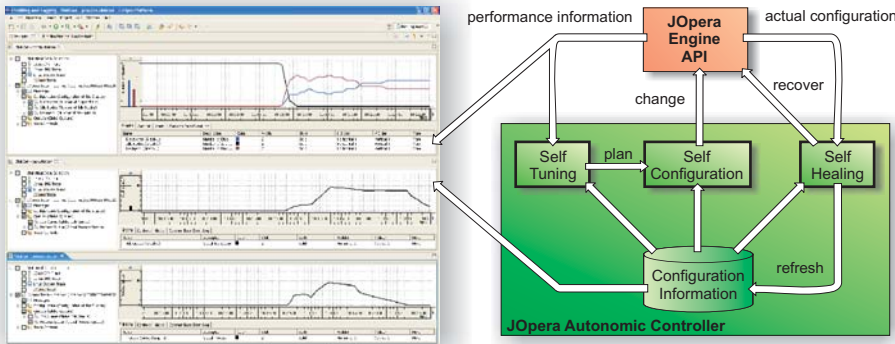
Gustavo Alonso
alonso@inf.ethz.ch
Department of Computer Science
Swiss Federal Institute of Technology (ETHZ)
Zurich, Switzerland

www.jopera.org



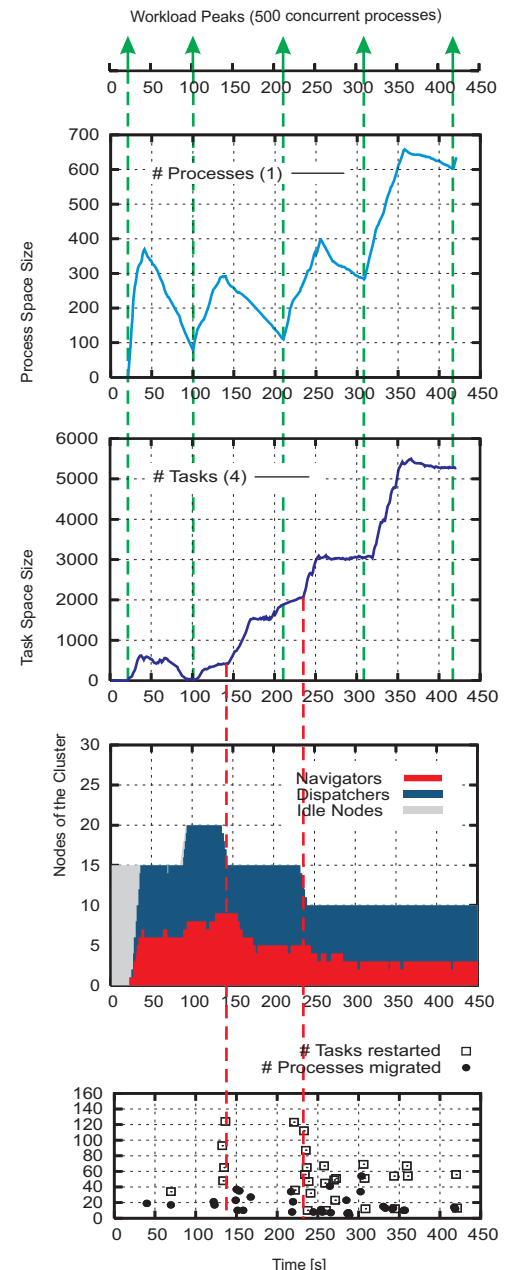
- Distributed workflow engine needs to be configured correctly to run on a cluster
- Autonomic controller provides self-tuning, self-configuration and self-healing capabilities
- Self-tuning and self-configuration components to achieve optimal configuration
- Self-healing component recovers the system from internal and external failures

Autonomic Controller



JOpera provides a flexible autonomic platform for distributed execution of Web service workflows

Demo



Distributed Engine Architecture

